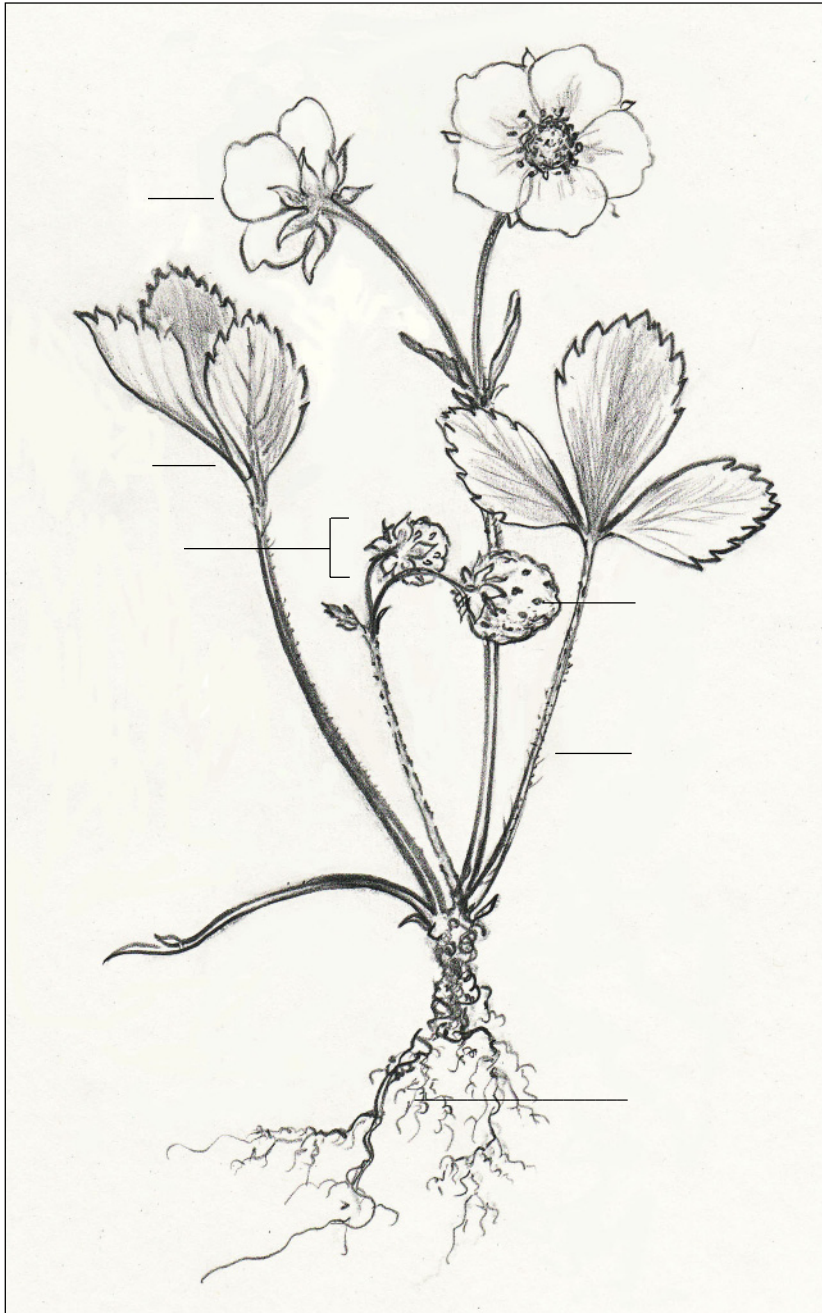




Strawberries

Can you label the basic parts of this strawberry plant?



1. **ROOTS** that absorb water and minerals and hold the plant securely in the soil.

2. A three-part, heavily toothed **LEAF**. These are the main sites of solar-powered food production (photosynthesis). Here, the plant captures some of the sun's energy and uses it to make sugars and starches (carbohydrates).

3. A **STEM** that lifts the leaves or flowers up into the sunlight. It also carries sugar and water up and down between these structures and the roots.

4. A **FLOWER** with five white petals. It's growing on its own distinct stem. The flower attracts insect pollinators. Seeds will be formed here when pollen combines with the ovules.

5. A developing **STRAWBERRY** - which is technically a receptacle (a stem end) rather than a true fruit!

6. A tiny **SEED IN A DRY FRUIT** known as an achene. These are located on the outside of the red strawberry. These seeds can grow into new strawberry plants.

Extra Credit~

To make certain that the pollen is carried from flower to flower, please **draw AN INSECT POLLINATOR** such as a honeybee, bumblebee, or bee fly.

To make certain that the seeds are dispersed, please **draw AN ANIMAL WHO HELPS IN DISPERSAL**.

This could be a catbird, a white-throated sparrow, an American robin, or even a box turtle, among others!

Farmers associated with NOFA-NH, parents and educators are welcome to copy or print this page for free distribution. It must be reproduced unchanged and in its entirety. This page and its illustrations may not be included in other publications without written permission.