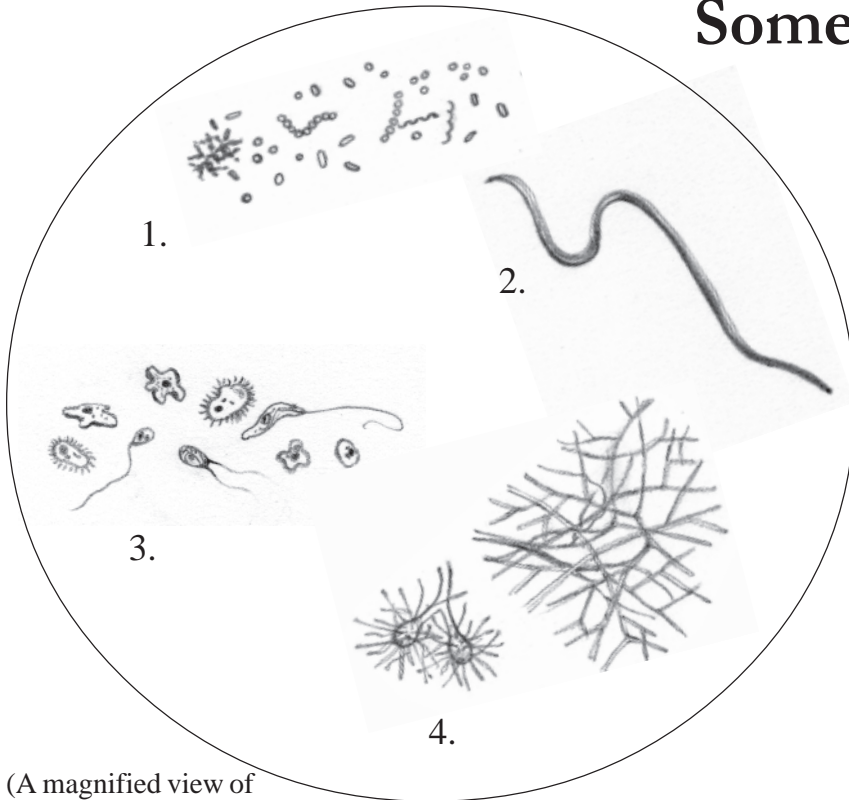


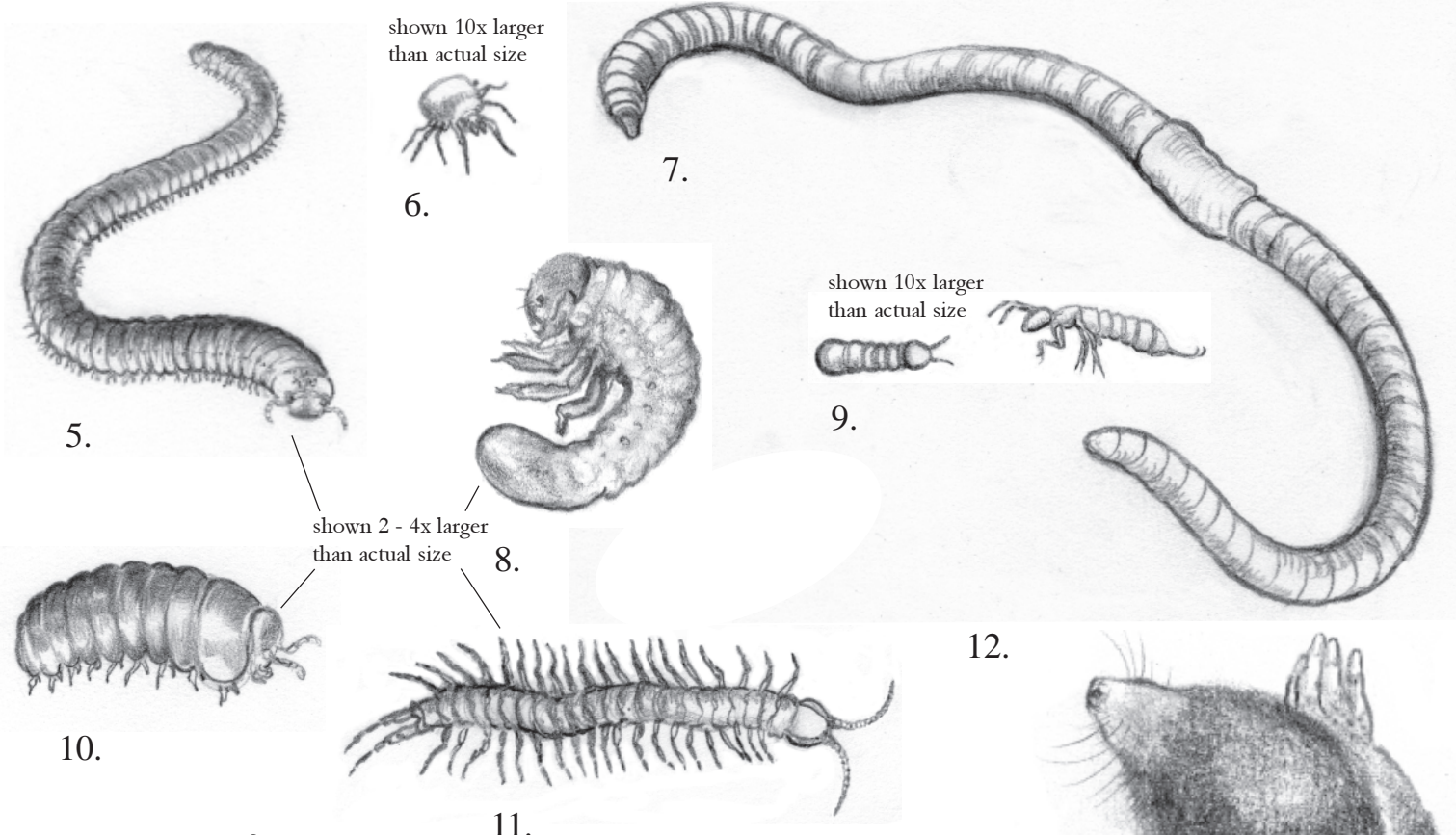
Some Important Citizens of the Soil



(A magnified view of some living beings in the soil, most of whom are far too small for us to see without a microscope)

Please write the correct name for each creature next to its numbered image. Here's a word bank to help you learn the correct spellings. Be prepared to discuss how these fellows interact and contribute to the health and functioning of the soil community.

- a. Mole
- b. Millipede
- c. Earthworm
- d. Springtails
- e. A mycorrhizal Fungi and a second, less specialized type of Fungi
- f. June Beetle Larva
- g. Bacteria in general - showing spiral, rod and spherical shapes
- h. Various Protozoa
- i. Sowbug (a land-dwelling isopod)
- j. Centipede
- k. Velvet Mite (bright red in color)
- l. Nematode



Edith Pucci Couchman © 2012

Answers: a-12, b-5, c-7, d-9, e-c, f-8, g-1, h-3, i-10, j-11, k-6, l-2

Farmers associated with NOFA-NH and parents and educators are welcome to copy or print this page for free distribution. It must be reproduced unchanged and in its entirety. The illustrations may not be included in other publications without written permission.

